



Samsung solutions. For the way you do business.



Solutions Guide  
Printer/MFP /Copier (A3/A4)

# Samsung Solutions for all Vertical Markets

Communicating effectively in today's business environment requires much more than high-quality network print and multifunction devices. Company directors and IT managers demand productive solutions that address specific issues in their businesses, enabling them to manage print output more effectively, communicate with clarity, and keep a firm eye on their costs. Samsung's extensive range of A3/A4 print, scan, fax and document management solutions do exactly that, by combining quick, high-quality output with seamless network integration. All supported by the very latest device functionality and premium security management.

In addition to Samsung's own customizable solutions, Samsung has formed partnerships with a select group of experienced and proven solutions providers to develop customizable document solutions for every type of business, including highly sensitive industries, such as education, government, financial, healthcare, public relations and legal.

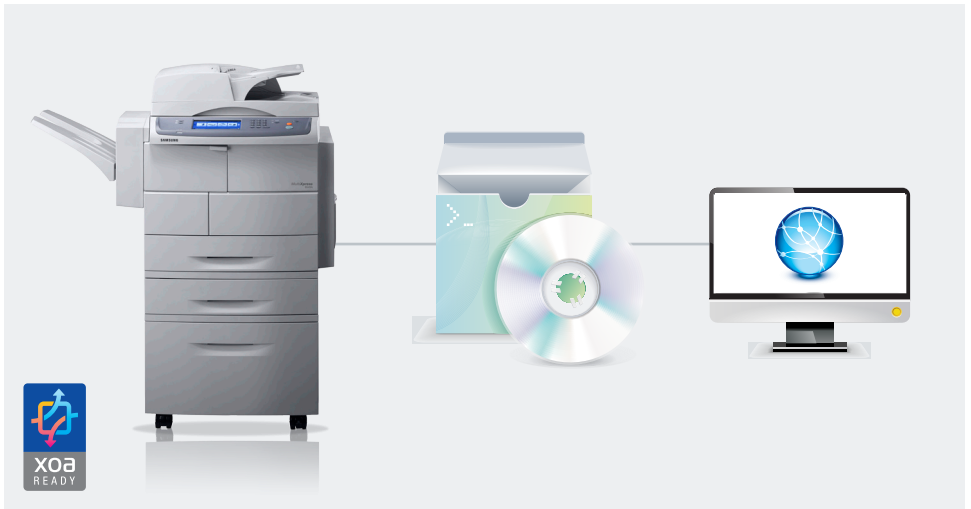




# XOA (eXtensible Open Architecture)

The XOA (eXtensible Open Architecture) is an open architecture platform that supports full customization of components. By using it, customers can have a uniform look and feel on all Samsung new generation multifunction printers/copiers. XOA allows users to develop and install custom applications onto their Samsung MFPs. These custom applications can be developed by Samsung or solutions partners.

The XOA is based on Java and Web technologies. It provides Java APIs and Web Services to extend the functionality of Samsung MFPs. Solutions partners can create their applications with Java as embedded applications and develop external applications with Web Languages.



## What are the Benefits of XOA?

The Samsung XOA Platform allows organizations to integrate third party software solutions with Samsung devices, instantaneously extending the functionality of the devices, reducing or even eliminating the need for further hardware investment. Such flexibility ensures uninterrupted productivity and minimal downtime during integration and installation.

### Benefits Summary

- Intelligent integration across a wide range of network services
- Easy integration means minimal downtime during installation
- A flexible solution for continuous productivity
- Maximizes extensibility and customizability
- Can be easily updated anytime





# Samsung Solutions for Security and Productivity

Samsung offers intelligent devices with a variety of solutions that increase office productivity.

## Document Management

- SmarThru (Workflow)\*
- DPD - GoldFax
- Drive
- Prism
- Intellinetics
- ImageShare



## Forms

- Objectif Lune
- Gravic
- Prism
- Ubiquitech



## Job Accounting

- Genius Bytes
- BITS
- Pharos
- Vendapin



## MPS

- CounThru\*
- MWAI
- Print Audit
- Print Fleet
- FM Audit



## Premium Security

- Common Access Card (CAC)\*
- SecurThru\*
- Common Criteria\*
- RF-Ideas
- Relyco



## Device Management

- SyncThru 5\* (Web Services)
- SyncThru\* (Web Admin)



# Samsung Solutions Partners

Cost- and time-saving solutions customized for Samsung printers, MFPs and copiers.



**APWI** – Converts legacy data streams to work with standard PCL network printers.  
[www.apwi.com](http://www.apwi.com)



**BITS** – Provides cost-effective and simple secured printing where users print to a central print queue and then collect the print from any XOA-enabled device following an authentication process.  
XOA EMBEDDED | [www.bits.uk.com](http://www.bits.uk.com)



**DPD Int'l. GoldFax** – Centralizes control of inbound and outbound faxing without multifunctional peripheral fax kits or fax lines.  
XOA EMBEDDED | [www.goldfax.com](http://www.goldfax.com)



**Drive** – Provides document management, imaging and workflow applications to provide clients superior control of their information.  
XOA EMBEDDED | [www.drive.com](http://www.drive.com)



**FMAudit** – Provides a suite of remote meter reading and managed print services tools for the office equipment and print management industries.  
[www.fmaudit.com](http://www.fmaudit.com)



**Genius Bytes** – Provides a secure printing platform allowing users to have full control over their printing environments while protecting from unauthorized copying or printing.  
XOA EMBEDDED | [www.geniusbytes.com](http://www.geniusbytes.com)



**Gravic Inc.** – Provides automated test grading using OMR (Optical Mark Recognition) technology, allowing schools to create their own tests and grading templates.  
[www.gravic.com](http://www.gravic.com)



**ImageShare** – Provides a user-friendly solution for organizations that require a centralized location for scanning, modifying, and distributing documents in a secure multi-format environment; allows users to work from their desktops.  
[www.scanroutemanage.com](http://www.scanroutemanage.com)



**Intellinetics** – Provides an Enterprise Contact Management platform to deliver economic indexing, workflow, advanced security and enhanced access control.  
XOA EMBEDDED | [www.intellinetics.com](http://www.intellinetics.com)



**MWai** – Provides PC-less intelligent device management solutions for MPS with service diagnostics, automated meter reading, service call creation, service call avoidance, reporting and analytics.  
XOA EMBEDDED | [www.mwaintel.com](http://www.mwaintel.com)



**Objectif Lune** – Provides document workflow and forms management and enhancement, eliminating multi-part forms and increasing efficiency and speed.  
[www.objectiflune.com](http://www.objectiflune.com)



**Pharos Systems** – Provides print and copy management and cost recovery for educational institutions and libraries, as well as print asset management for corporations.  
XOA EMBEDDED | [www.pharos.com](http://www.pharos.com)



**Print Audit** – Provides document management and MPS tools to manage and lower print costs.  
[www.printaudit.com](http://www.printaudit.com)



**Print Fleet** – Provides a print management system with software and tools to monitor, report, help reduce costs and improve efficiencies.  
[www.printfleet.com](http://www.printfleet.com)



**Prism Software** – Manages complete electronic document lifecycle, including automatic filing and archiving into any system with a Zone OCR function, saving time and resources.  
XOA EMBEDDED | [www.prismsoftware.com](http://www.prismsoftware.com)



**Relco Sales** – Provides an array of economical MICR check and security document printers and supplies powered by Samsung, along with specialty media.  
[www.relyco.com](http://www.relyco.com)



**RF Ideas** – Manufactures proximity and contactless reader solutions for secure printing, as well as for employee identification, building access and other applications.  
[www.rfideas.com](http://www.rfideas.com)



**Ubiquitech** – Provides job accounting coupled with print management, tracking and print quotas linking users to their actual print output.  
XOA EMBEDDED | [www.ubiquitech.com](http://www.ubiquitech.com)



**Vendapin** – Provides cost recovery with coin-op and RFID payment stations for Samsung MFPs and copiers.  
[www.vendapin.com](http://www.vendapin.com)

Samsung experts work with our dealers and resellers to select the right solutions for customer requirements.

# Samsung Developed Solutions

Samsung offers the perfect way for you to do business, no matter what your business is. Customizable solutions give you efficient control over your document workflow.

## SmarThru™ Workflow 2 Document Management Software

SmarThru Workflow is a digital document-sending solution that streamlines and simplifies your document workflows, from capturing paper and electronic documents to distributing them to predefined destinations and processes.

The key to customized workflow for the scanned document is Workform, which enables settings for one-stop transmission from the device to final destinations. This solution is a web-based application supporting multiple users and devices. Functionality of SmarThru Workflow can be extended with various plug-ins.

### SmarThru Workflow 2:

- Improves business efficiency
- Easily integrates into your existing infrastructure
- Reduces business costs by digitizing hard copies of documents
- Provides a secure data transferring system
- Verifies users with authentication



# Samsung Developed Solutions

## CounThru™ Managed Print Solution

CounThru is a total printer management solution for monitoring and managing through a remote management system.

### CounThru:

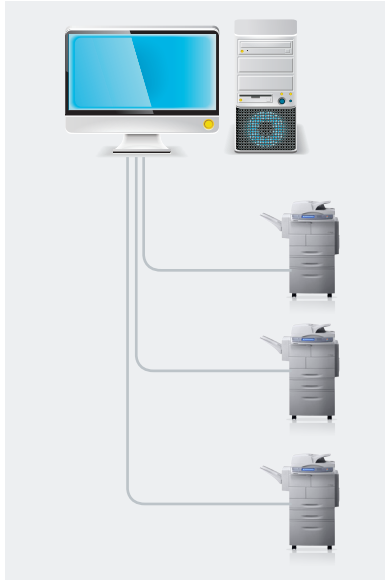
- Optimizes, controls and reduces the cost of corporate print/copy environments
- Realizes cost savings through a consolidated and optimized printing environment
- Provides a customized print environment utilizing the latest technologies
- Offers productivity improvements
- Manages print environment usage, tracking and reporting



# Samsung Developed Solutions

## SyncThru™ Web Admin Service

SyncThru Web Admin service is a fleet management solution for multiple network printers, as well as a centralized multi-device management solution with powerful features. All the devices in the network can be discovered, managed and reported. IT managers can directly access the SyncThru Web Service for each device. SNMP-compliant devices can be discovered and managed across vendors.



### SyncThru:

- Offers an efficient management tool to save time and costs
- Enhances productivity of device management
- Provides easy installation, access and operation
- Provides a powerfully centralized tool for IT administrators with appropriate functions
- Allows functionality that can be easily extended on demand by adding software plug-ins, such as Report Generator



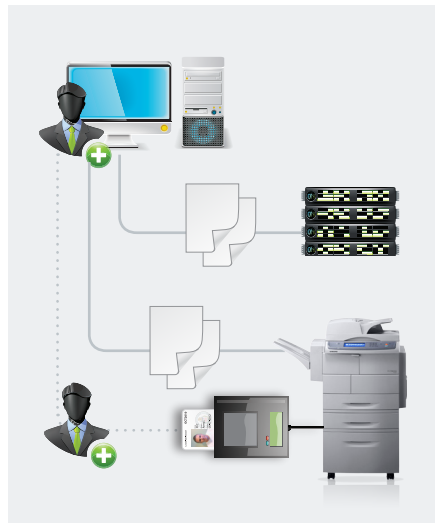
## SecurThru Lite 1.0

SecurThru Lite 1.0 is an XOA\*-based embedded application solution that provides security features for protecting intellectual assets and enabling convenient authentication. User-friendly authentication can be via a proximity card or an ID and password.

### Main Features

- Card Authentication
  - Card self-registration, two-factor authentication (user passcode)
  - Local (device) authentication, network (LDAP, SyncThru)
- Secure Release Printing
  - Job list display for authenticated user, job release for selected item with printing options
  - User Interface (UI) to view personal job list and to delete personal jobs
  - Admin UI to set up SRP (Secure Release Printing) mode and retention period
- Job Accounting
  - Job log history and individual usage report (through SyncThru integration)

\*Supported by XOA printers/MFPs





# Samsung Developed Solutions

## CAC – Common Access Card

This Samsung solution supports Government needs for CAC (Common Access Card) Authentication.

### Main Features

- Complies with HSPD-12 specifications
- CAC and PIV cards support
- Authenticates CAC cardholder against user PIN
- Blocks all MFP functions unless user authenticates
- Auto insertion of user's email address
- Supports group policy and/or user policy
- Secure print-job release with use of CAC card
- LDAP SSL authentication
- PKI/OCSP server authentication
- Extracts user certificate
- Digital signature using user private key
- E-mail encryption (AES 256) using recipient public key



### Typical Workflow to Release Print Jobs

- 1 Document to be printed is sent from user's PC.



- 2 Job is queued up by MFP.



- 3 User inserts common access card at MFP and enters PIN.

- 4 PIN/User Access Level is validated with DoD/LDAP authentication servers.\*

- 5 Document is printed. Usage log is saved on LDAP server.

\*Please see our Samsung Security Brochure for supported printers/MFPs.

## X0A-Based Printers/MFPs



### CLX-9250ND A3 Color Laser Multifunction Printer/Copier

- 25 ppm color copy, print, scan and fax with 8.9" color touch screen
- 100,000 pages monthly duty cycle
- Fully featured color A3 MFP with optional finishing capabilities



### CLX-9350ND A3 Color Laser Multifunction Printer/Copier

- 35 ppm color copy, print, scan and fax with 8.9" color touch screen
- 150,000 pages monthly duty cycle
- Fully featured color A3 MFP with optional finishing capabilities



### CLX-8540NX Color Laser Multifunction Printer

- 40 ppm color copy, print, scan and fax with auto-duplexing
- 100,000 pages monthly duty cycle
- 7" color touch screen



### SCX-8030ND A3 Mono Laser Multifunction Printer/Copier

- 30 ppm copy, print, scan and fax with 8.9" color touch screen
- 100,000 pages monthly duty cycle
- Fully featured mono A3 MFP with optional finishing capabilities



### SCX-8040ND A3 Mono Multifunction Printer/Copier

- 40 ppm copy, print, scan and fax with 8.9" color touch screen
- 150,000 pages monthly duty cycle
- Fully featured mono A3 MFP with optional finishing capabilities



### SCX-5935NX Mono Laser Multifunction Printer

- 35 ppm print, copy, scan, fax and PC fax with duplexing
- 80,000 pages monthly duty cycle
- 7" color touch screen



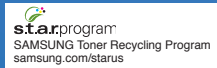
### SCX-6555NX Mono Laser Multifunction Printer

- 55 ppm copy, print, scan and fax with auto-duplexing
- 250,000 pages monthly duty cycle
- 7" color touch screen



[samsung.com/printer](http://samsung.com/printer)

Product Support: 1-866-SAM-4BIZ • 1-800-SAMSUNG



©2011 Samsung Electronics America, Inc. Samsung is a registered mark of Samsung Electronics Corp., Ltd. Specifications and designs are subject to change without notice. Non-metric weights and measurements are approximate. All brand, product, service names and logos are trademarks and/or registered trademarks of their respective manufacturers and companies. Simulated screen images. See [samsung.com](http://samsung.com) for detailed information. Printed in USA. PNT-SOLUTIONSBRO-APR11T